

**NCERT Exemplar Solutions for Class 6 Science**  
**Chapter 1: Food - Where does it come from?**

---

**Multiple Choice Questions**

**Question 1**

Given below are names of some animals:

- (i) Goat
- (ii) Human beings
- (iii) Cockroach
- (iv) Eagle

Which of the above animals form a pair of omnivores?

- (a) (i) and (ii)  
(b) (ii) and (iii)  
(c) (iii) and (iv)  
(d) (ii) and (iv)

**Solution: (b) Human beings and Cockroach**

Human beings and cockroaches eat both plants and animals, making them omnivores. Goats consume only plants and plant products, classifying them as herbivores. Eagles feed on the flesh of other animals, making them carnivores.

---

**Question 2**

Honeybees make honey from:

- (a) pollen  
(b) petals  
(c) nectar  
(d) bud

**Solution: (c) nectar**

Honeybees collect nectar from flowers and transport it to their beehive. They convert this nectar into honey and store it as food. This is why we obtain honey from beehives.

---

**Question 3**

Below are names of some animals:

- (i) Cow
- (ii) Sheep
- (iii) Horse
- (iv) Ox

Which of the above are sources of milk for human beings?

- (a) (i) and (iii)  
(b) (i) and (ii)  
(c) (ii) and (iii)  
(d) (iii) and (iv)

**Solution: (b) Cow and Sheep**

Cows and sheep are dairy animals, meaning they are kept specifically for obtaining milk. They are also called milch animals. Oxen and horses are draught animals, used primarily for transportation and agricultural work.

---

#### Question 4

Given below is a list of edible plants:

- (i) Banana
- (ii) Pumpkin
- (iii) Lady's finger
- (iv) Brinjal

Which pair of plants have two or more edible parts?

- (a) (i) and (ii)  
(b) (ii) and (iii)  
(c) (iii) and (iv)  
(d) (i) and (iv)

#### Solution: (a) Banana and Pumpkin

In banana plants: stem, fruit, and flower are all edible. In pumpkin plants: both flower and fruit are edible. In lady's finger and brinjal plants: only the fruit is consumed as food.

---

#### Question 5

The part of a banana plant NOT used as food is:

- (a) flower  
(b) fruit  
(c) stem  
(d) root

#### Solution: (d) root

In banana plants, the stem, fruit, and flower are all edible and nutritionally valuable. The root, however, is not consumed as food.

---

#### Question 6

Read each set of terms and identify the odd set:

- (a) Cow, milk, butter  
(b) Hen, meat, egg  
(c) Goat, milk, meat  
(d) Plant, vegetable, butter milk

#### Solution: (d) Plant, vegetable, butter milk

Vegetables are parts of plants (plant products), whereas buttermilk is an animal product derived from milk. This makes option (d) the odd set as it mixes plant and animal products.

---

#### Very Short Answer Questions

##### Question 7

Read the clues and fill up the blanks:

(a) Honeybees suck \_\_\_\_\_ from flowers.

N \_ \_ T \_ R

(b) Animals which eat other animals.

\_ A \_ N \_ V \_ R \_ S

(c) Animals which eat only plants and plant products.

H E \_ B \_ \_ \_ \_ E \_

(d) Animals which eat both plants and animals.

M N \_ I \_ O \_ \_

**Solution:**

- (a) **NECTAR**
- (b) **CARNIVORES**
- (c) **HERBIVORES**
- (d) **OMNIVORES**

---

**Question 8**

Why do boiled seeds fail to sprout?

**Solution:** Boiled seeds fail to sprout because the high temperature during boiling destroys the living cells and enzymes within the seed that are essential for germination. The heat kills the embryo inside the seed, making it unable to grow into a new plant.

---

**Question 9**

Where do bees store honey?

**Solution:** Bees store honey in their beehives, specifically in hexagonal wax cells called honeycombs that they construct within the hive.

---

**Question 10**

Name two ingredients in our food that are not obtained from plants or animals. Mention one source for each ingredient.

**Solution:** Two ingredients in our food that are not obtained from plants or animals are:

1. **Salt** - Main source: seawater and rock salt deposits
2. **Water** - Sources: rivers, wells, tube wells, rain, lakes, etc.

---

**Question 11**

Given below are jumbled words which are names of parts of a plant. Rearrange them to get the correct words:

- (a) LILCHI
- (b) ITRUF
- (c) SEANBOYA
- (d) GURSA
- (e) ROUNDGUNT

**Solution:**

- (a) **CHILLI**
- (b) **FRUIT**
- (c) **SOYABEAN**
- (d) **SUGAR**
- (e) **GROUNDNUT**

---

**Short Answer Questions**

**Question 12**

Identify the animals in the given grid and categorize them into herbivore, carnivore, and omnivore:

T A C O W O L F  
T A R W X G O R  
N N O L I O N O

E T W Q L A N G  
H U M A N T W O

**Solution:**

T	A	C	O	W	O	L	F
T	A	R	W	X	G	O	R
N	N	O	L	I	O	N	O
E	T	W	Q	L	A	N	G
H	U	M	A	N	T	W	O

**Animals found:** Cow, Wolf, Lion, Frog, Goat, Hen, Cat, Rat, Crow, Human, Ant, Owl

**Classification:**

- **Herbivores:** Cow, Goat, Hen
- **Carnivores:** Wolf, Lion, Frog
- **Omnivores:** Cat, Rat, Crow, Human, Ant, Owl

**Question 13**

Why should we avoid wastage of food?

**Solution:** We should avoid wastage of food because:

1. **Limited availability:** Sufficient food is not available for everyone in the world, and many people go hungry.
2. **Economic reasons:** Food is expensive, and poor people cannot afford to buy even the minimum required amount of food.
3. **Resource conservation:** Food production requires valuable natural resources like water, soil, and energy.
4. **Environmental impact:** Food waste contributes to environmental problems and greenhouse gas emissions.

**Question 14**

Why do organisms need food? Write two reasons.

**Solution:** Organisms need food because:

1. **Energy source:** Food provides energy required to carry out all life activities and daily work.
2. **Growth and repair:** Food helps in building and strengthening body parts, supporting growth and repair of tissues.
3. **Disease protection:** Food contains essential minerals and nutrients that help protect the body against diseases and maintain good health.

**Question 15**

Match the organisms given in Column I with their parts/products in Column II that are used by human beings as food:

Column I	Column II
(a) Mustard plant	(i) Meat
(b) Goat	(ii) Fruits and vegetables
(c) Hen	(iii) Seed

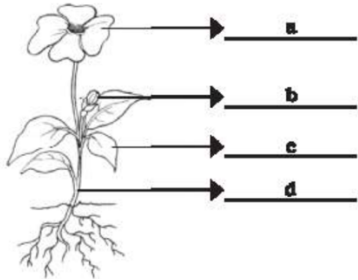
**Note:** The original question appears to have some formatting issues with irrelevant options (smoke, wind, etc.). The corrected matching would be:

**Solution:**

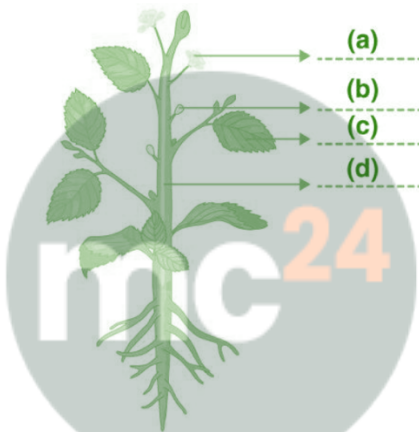
- (a) Mustard plant → (iii) Seed (mustard seeds are used as spice)
- (b) Goat → (i) Meat (goat meat is consumed)
- (c) Hen → Eggs and meat (both are used as food)

**Question 16**

Label the different parts of the plant shown in the diagram:



**Solution:** The parts of the plant are:



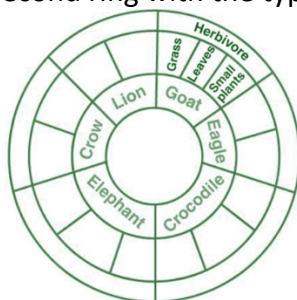
- (a) Flower
- (b) Floral bud
- (c) Leaf
- (d) Stem
- Root (the bottom part of the plant)

**Myclass24**  
Your Class. Your Pace.

**Long Answer Questions**

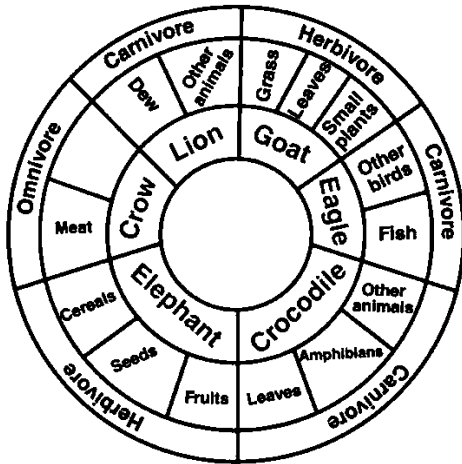
**Question 17**

Read the names of animals and categorize them based on their eating habits. Fill in the second ring with the types of food they eat and the outermost ring with their category.



**Animals:** Lion, Goat, Eagle, Elephant, Crocodile, Cow

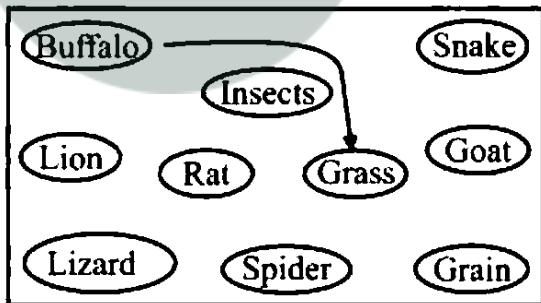
**Solution:**



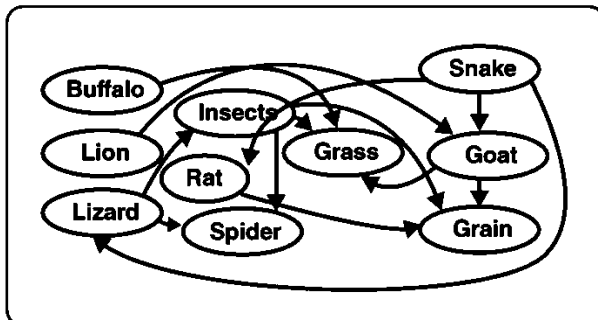
Animal	Food Type	Category
Lion	Other animals, meat	Carnivore
Goat	Grass, leaves, plants	Herbivore
Eagle	Fish, other birds, small animals	Carnivore
Elephant	Leaves, fruits, bark, grass	Herbivore
Crocodile	Fish, amphibians, other animals	Carnivore
Cow	Grass, leaves, cereals	Herbivore

**Question 18**

Connect the animals with the food they eat:



**Solution:**



- **Buffalo** → Grass
- **Lion** → Goat (and other animals)
- **Lizard** → Insects, Spider
- **Rat** → Grain
- **Insects** → Grain, Grass
- **Spider** → Insects
- **Snake** → Rat, Lizard, Goat
- **Goat** → Grass, Grain

---

### Question 19

List two of your favorite food items and mention their ingredients.

#### Solution:

##### Food Items Ingredients

1. Dal Curry Dal (lentils), onions, tomatoes, oil, water, salt, turmeric, spices
2. Kheer Rice/Rava, milk, ghee, sugar, dry fruits (almonds, cashews, raisins)

##### Additional Examples:

- **Vegetable Curry:** Mixed vegetables, oil, spices, salt, water, onions, garlic
- **Chapati:** Wheat flour, water, salt, oil

---

### Key Concepts Summary

#### Food Classification by Source:

1. **Plant sources:** Fruits, vegetables, grains, nuts, seeds
2. **Animal sources:** Milk, meat, eggs, honey
3. **Other sources:** Salt (minerals), water

#### Animal Classification by Diet:

1. **Herbivores:** Animals that eat only plants (cow, goat, elephant)
2. **Carnivores:** Animals that eat only other animals (lion, tiger, eagle)
3. **Omnivores:** Animals that eat both plants and animals (humans, bears, crows)

#### Importance of Food:

- Provides energy for daily activities
- Helps in growth and development
- Protects against diseases
- Maintains good health

#### Food Conservation:

- Avoid wastage to ensure food security
- Share resources fairly
- Preserve for future generations